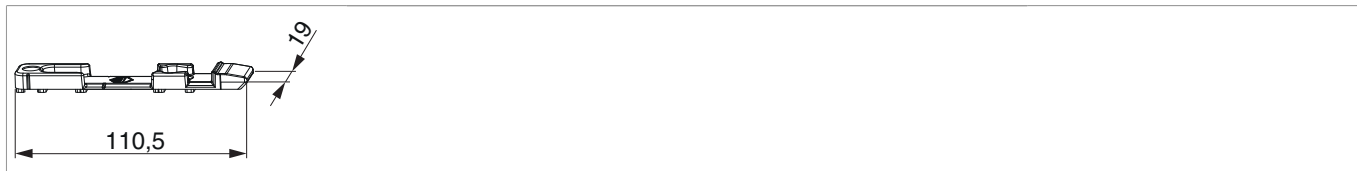




33932 - Scontro ribalta per canalino euro 6/8x4 dx+sx argento

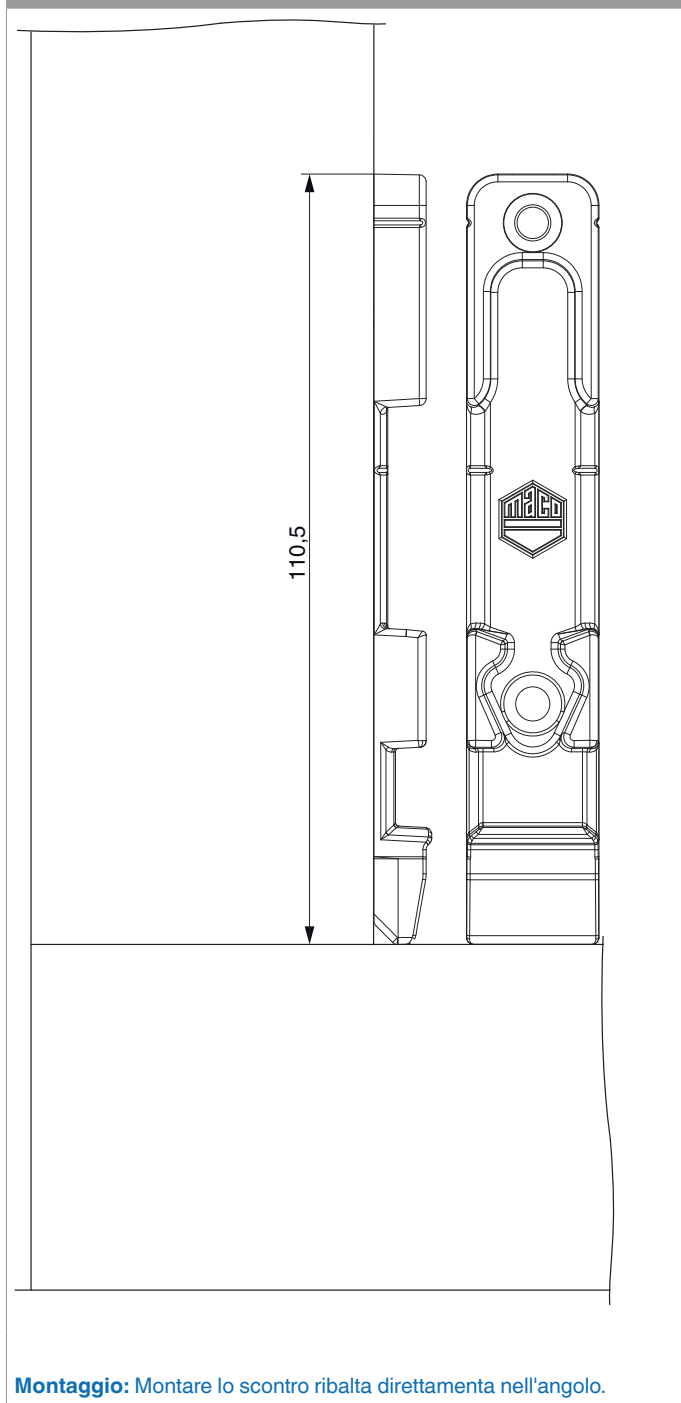
Disegni tecnici

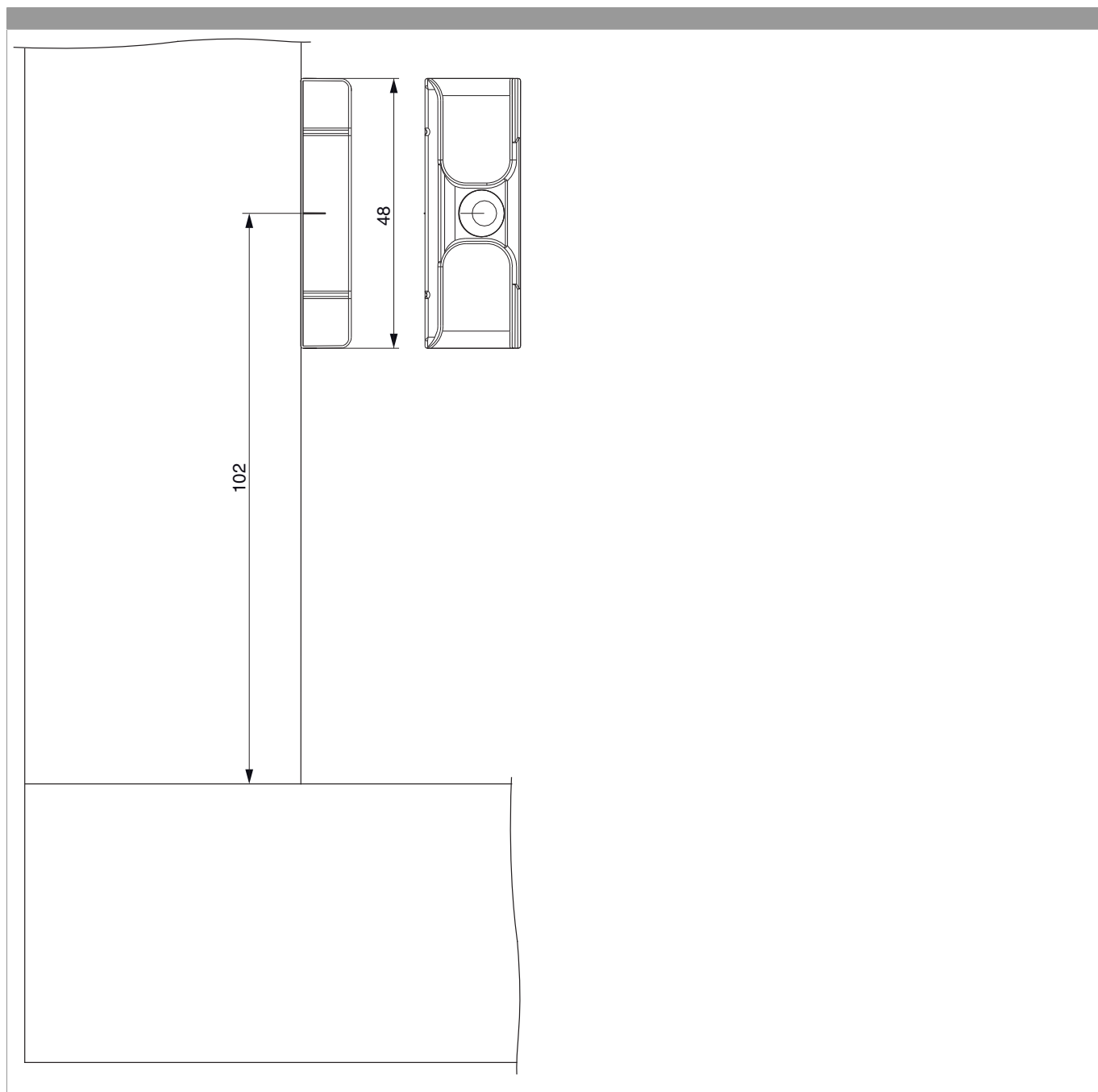


		L	B	A		Nº
argento	dx+sx	110,5	19	7,5	100	33932

Posizionamento degli scontri

Scontri ribalta







Sezione profilo

A12 Euronut 6/8/4 - 1 anta

